

Low power QRSS beacon: reports1

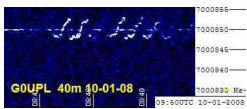
Written by Hans Summers

Saturday, 20 June 2009 16:26 -

I ran the beacon for a few days on 30m with my 10.140MHz crystal but had no reports. On New Year's day 2008, I changed the crystal for 40m. I have several 40m crystals and chose to use a 7,014 kHz crystal. The frequency was set at about 7,014,130. Later, Peter DL6NL sent me a 7,000kHz crystal, and I was able to move to the favoured QRSS sub-band of 7,000,850 +/- 50Hz.

The following reports are in reverse chronological order (most recent first):

10-Jan-08: Peter DL6NL's new crystal: 7,000,850 10mW



Les G3VYZ, 09:49

Thanks for the first report on the new crystal!

Shows the horizontal line that Les sees at 50Hz intervals, TV QRM

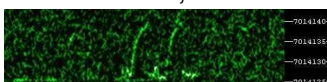


John GM0RZY, 15:17

07-Jan-08: 7,014,130 10mW



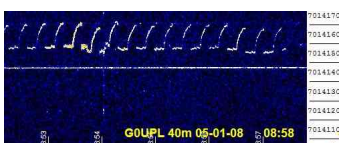
Les G3VYZ, 10:35



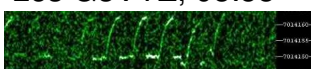
Peter PA1SDB, 12:00

G0UPL pops out of the noise just before noon, at 11:56

05-Jan-08: 7,014,130 10mW



Les G3VYZ, 08:58



Low power QRSS beacon: reports1

Written by Hans Summers

Saturday, 20 June 2009 16:26 -

Peter PA1SDB, 08:58

Shows the same hiccup at 08:54 as observed by Les (see above) at the same time. Nobody was in the s

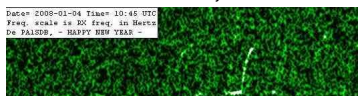


SWL Mark, 14:35

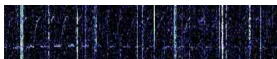
04-Jan-08: 7,014,130 Power was increased to 10mW



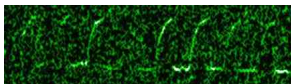
Pierre ON5SL, 10:42



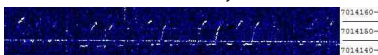
Peter PA1SDB, 10:45



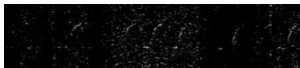
Johan ON5EX, 10:50



Peter PA1SDB, 14:15

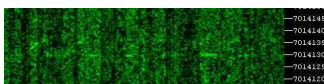


Les G3VYZ, 18:59

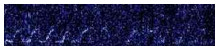


SWL Mark, 19:02

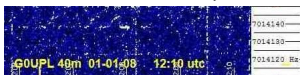
01-Jan-08: 7,014,130 1.8mW



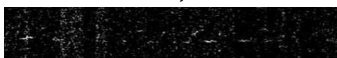
Peter PA1SDB, 09:15



Pierre ON5SL, 11:29



Les G3VYZ, 12:10



SWL Mark, 13:18

Low power QRSS beacon: reports1

Written by Hans Summers

Saturday, 20 June 2009 16:26 -
